

## GIS Services

### *Complete Integration for Your Geographic Information System*

True Automation provides full Geographic Information System (GIS) services for Appraisal Districts. These services include all aspects of a GIS implementation project: experienced consulting, and project management to full product and data development and comprehensive integration.

#### **Trust the Experts**

True Automation offers full service consulting services for a GIS implementation project. This service includes project management, product development, and GIS training.

True Automation's staff has years of experience working with GIS software in the appraisal district environment. Don't struggle with implementing and integrating your GIS information by yourself. Leave the work to the experts.

#### **Broad Project Management**

Complete project management services are available to those clients that are trying to establish their GIS project and require professional expertise. Needs assessment analysis, RFP preparation, Board of Director education, and management of other vendor contracts are all areas in which True Automation can provide the necessary expertise to enhance a developing or existing GIS project.

#### **GIS Product Development**

Custom application and interfaces can be developed to suit the individual needs of appraisal districts. Visual Basic, C++ and other programming languages can be used for custom product development. Experience with Microsoft

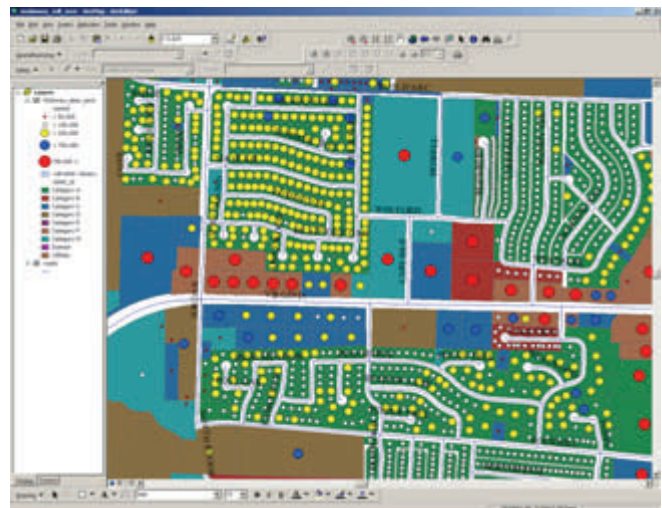
SQL Server, Oracle, Sybase and Informix allows True Automation to build a fully integrated GIS package.



#### **Comprehensive Integration**

Using today's modern mass appraisal systems, your GIS data can be easily integrated with your appraisal data. With such integration in place, the possibilities are endless. There is additional functionality that you can leverage with this comprehensive integration:

- Verify jurisdiction boundaries and coding
- Analyze various property characteristics by region and neighborhood
- Validate land pricing schedules
- Provide an informative tool for ARB hearings
- Develop better field tools for appraisers
- Assist the public with quicker and more informative request for information
- Analyze sales ratios geographically prior to state property value study



Market Value Analysis by State Code

Experienced Consulting

Broad Project Management

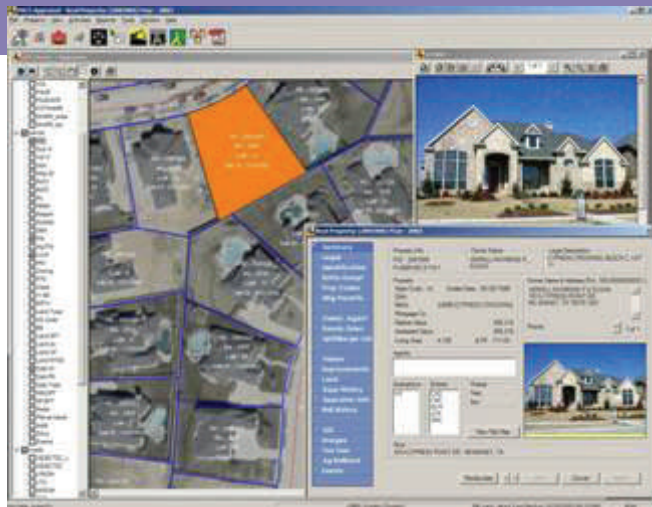
GIS Product Development

Customized Training

Industry Standard Data Development

Detailed Data Maintenance

Comprehensive Integration



GIS Integration with PACS

Map coverage is integrated into the mass appraisal system and you are able to quickly access the property information by simply clicking on the map. You are able to pull up the desired property, print an appraisal card, or print the picture of the property all directly from the map interface.

## Customized Training

Training of appraisal district personnel in the use and implementation of GIS is one of True Automation's greatest strengths. Our staff has extensive experience using GIS within the Appraisal District environment.

True Automation understands the issues that an appraisal district faces. Not only can True Automation provide instruction on new GIS technology, but we can customize any training session for an individual appraisal district's needs and therefore have CAD staff focused on those areas of GIS that are relevant to their operations.

## Industry Standard Data Development

True Automation can perform data capture functions for their clients. Data capture meth-

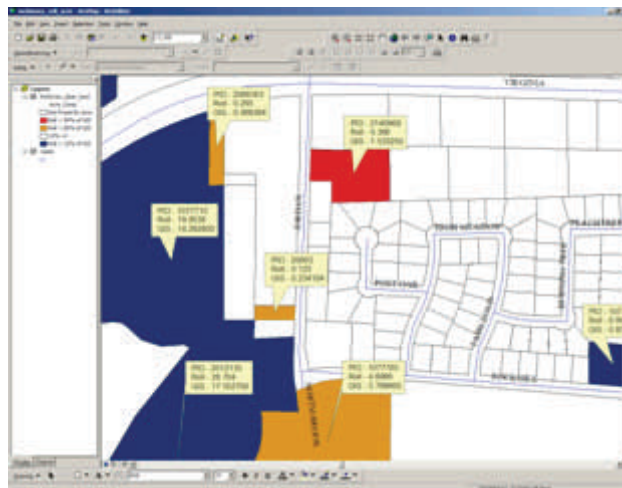


MS SQL Server, MS Access MS Word, MS Excel, Windows XP, Windows NT and Windows 2000 are all registered trademarks of Microsoft Corporation. MapObjects is a registered trademark of the ESRI Corporation. GeoMedia is a registered trademark of Intergraph Corporation.

ods include direct input from plats, scans, deeds and other engineering information. Data development is completed according to industry specific standards.

## Detailed Data Maintenance

Data maintenance services are a key component of the comprehensive solution that True Automation provides. Data that has previously been developed can be completely updated and maintained on a contract service basis. Deed records, new subdivision plats and other record changes can be used to provide a current and accurate base map. Our staff of professionals have extensive hands-on experience in the development, management and maintenance of GIS projects for appraisal districts.



Roll Acreage vs. GIS Calculated Acreage Comparison

And your district won't be left on its own after the initial services are completed. True Automation will be there to help you update your GIS information throughout the year.



TRUE AUTOMATION, INC.

2600 Technology Drive, Suite  
900  
Plano, TX 75074

Phone: 972-881-1858  
Fax: 972-633-0533  
[www.trueautomation.com](http://www.trueautomation.com)